

CANDIDATE  
NAME

CENTRE  
NUMBER

--	--	--	--	--

CANDIDATE  
NUMBER

--	--	--	--

**PAKISTAN STUDIES**

**2059/02**

Paper 2 The Environment of Pakistan

**October/November 2015**

**1 hour 30 minutes**

Candidates answer on the Question Paper.

**READ THESE INSTRUCTIONS FIRST**

Write your name, Centre number and candidate number in the spaces provided.

Write in dark blue or black pen.

Do not use staples, paper clips, glue or correction fluid.

**DO NOT WRITE IN ANY BARCODES.**

Answer any **three** questions.

The Insert contains Photographs A and B for Question 1 and Photographs C and D for Question 5.

The Insert is **not** required by the Examiner.

The number of marks is given in brackets [ ] at the end of each question or part question.

This document consists of **20** printed pages, **4** blank pages and **1** insert.

1 (a) (i) Describe **two** ways in which water supplies can be polluted.

- 1 .....
- .....
- 2 .....
- .....[2]

(ii) For **one** of these ways explain how the problem caused by pollution can be solved.

- .....
- .....
- .....
- .....[2]

(b) Study Fig. 1, a map showing the major rivers of Pakistan.

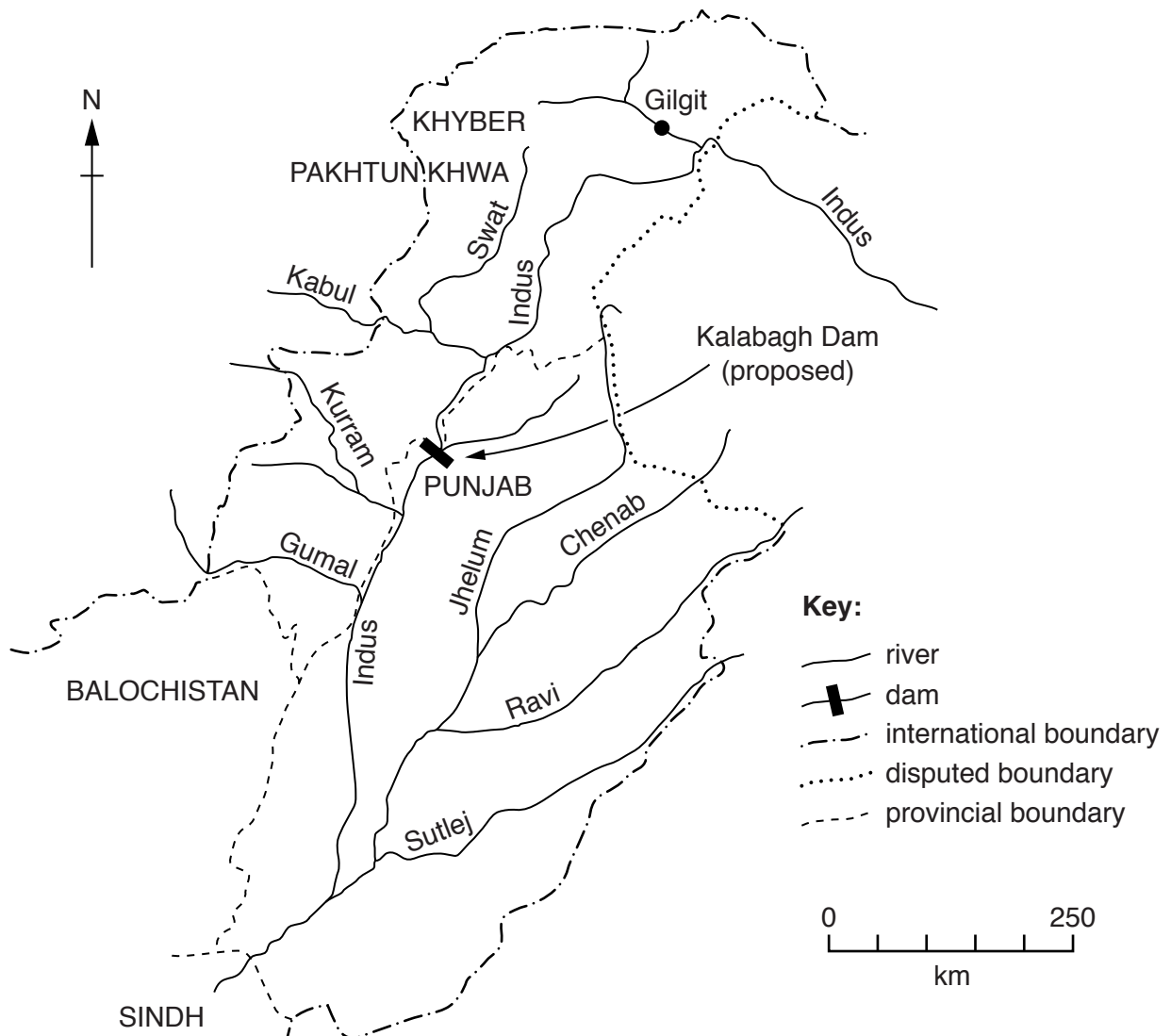


Fig. 1

(i) Locate the following two dams **on the map**:

- Warsak (**W**);
- Diamir Bhasha (under construction) (**D**). This dam is 150 km downstream of Gilgit.

Mark their positions using the appropriate symbol from the key and label each with the correct letter. [2]

(ii) What are the advantages of building a dam at the Diamir Bhasha site?

.....  
.....  
.....  
.....  
.....  
.....  
.....  
.....[4]

(iii) Read the following article about the proposal to build a new dam, the Kalabagh, on the River Indus at the point indicated on the map, Fig. 1.

**Kalabagh Dam – A Controversial Issue**

Punjab wants the Kalabagh Dam to be built, but there is opposition to the project from a section of the population in Sindh, Khyber Pakhtunkhwa and Balochistan.

Those who are opposed to the dam argue that it might be beneficial for Punjab and harmful for the other provinces.

The Kalabagh Dam issue is difficult to resolve at this stage.

Describe the disputes over water availability and use which can arise from proposals to build dams at sites such as this.

.....  
.....  
.....  
.....  
.....  
.....  
.....  
.....[4]

(c) Study Photographs A and B (Insert), which show typical scenes of deforestation.

(i) State **one** use of timber from forests that have been cut down.

.....[1]

(ii) Using the photographs and your own knowledge, describe the effects of deforestation on the natural environment.

.....  
.....  
.....  
.....  
.....  
.....  
.....  
.....  
.....  
.....  
.....[4]



2 (a) (i) Study Fig. 2, which shows the usage of natural gas in Pakistan in the year 2010–11.

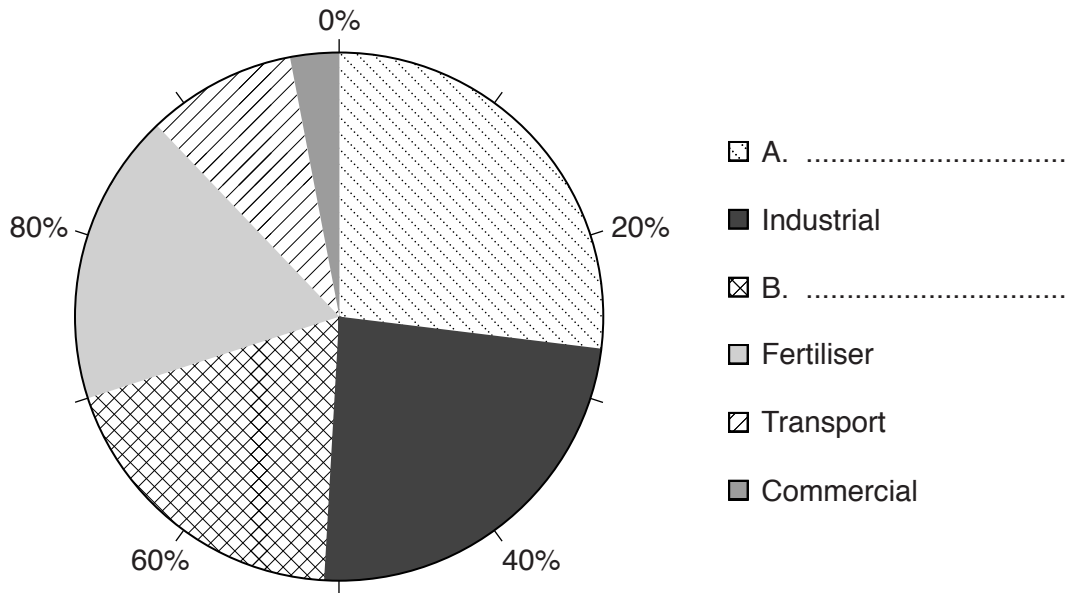


Fig. 2

In the key, name the activities A and B which are two of the main users of natural gas in Pakistan. [2]

(ii) State **two** ways in which gas is transported to homes in Pakistan.

1 .....

2 ..... [2]

(b) Study Fig. 3, which is a graph showing usage of electricity in Gigawatt-hours by three different sectors over a ten-year period.

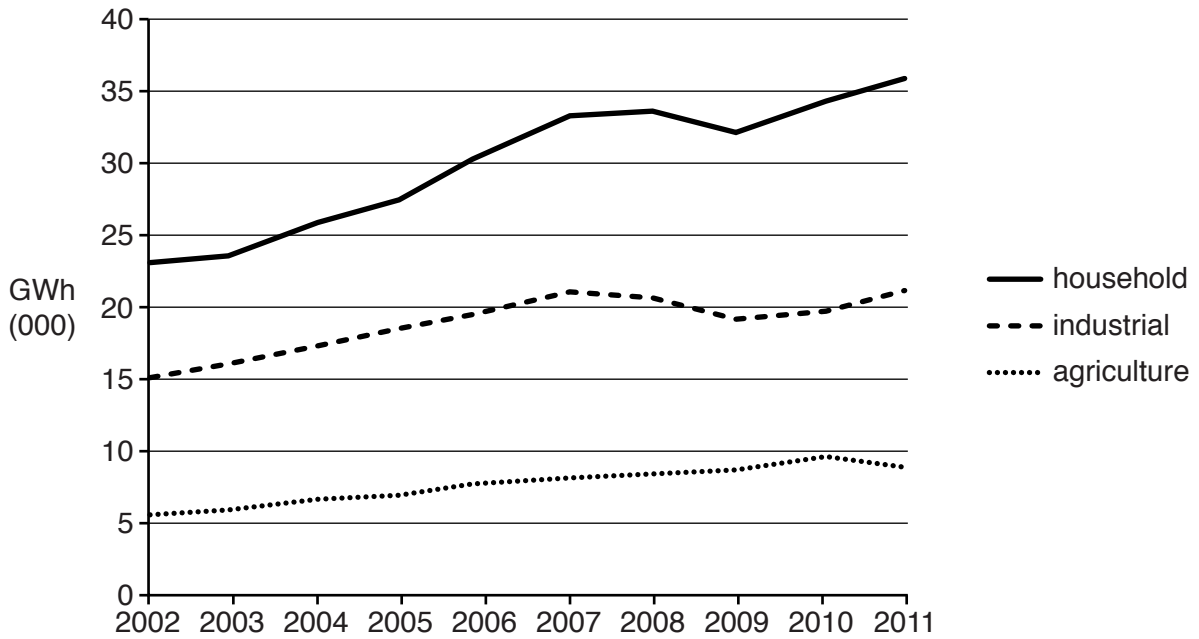


Fig. 3

(i) What was the industrial usage of electricity in 2004?

.....[1]

(ii) To what extent are the changes over the ten years similar for the three sectors?

.....  
.....  
.....  
.....  
.....  
.....  
.....[3]

(iii) Loadshedding is the deliberate, temporary reduction in supply of electricity from a power station. Explain the effect of loadshedding on industry and business.

.....  
.....  
.....  
.....  
.....  
.....  
.....  
.....  
.....[4]

(c) (i) A. From the list below, circle **one** place which regularly experiences the highest temperatures in June in Pakistan.

- Quetta      Karachi      Jacobabad      Abbottabad      Larkana      Zhob

B. Which range best describes the highest temperatures recorded? Put a tick in **one** of the boxes below.

Temperature (°C)	TICK
46–48	
49–51	
52–54	

[2]

(ii) Explain why the place you have named in (i) is the hottest place in Pakistan.

.....  
.....  
.....  
.....[2]



(iii) Describe the effects on people of living in extremely hot climates.

.....  
.....  
.....  
.....  
.....  
.....  
.....[3]

(d) It has been suggested that a power station to harness solar energy should be built in Bahawalpur District, Punjab. The solar panels and associated access roads and buildings will cover 25 km<sup>2</sup>.

Read the following two views about this proposal:

With fossil fuels running out, Pakistan needs to produce more renewable energy on this land.

As much land as possible is needed to grow food for Pakistan's growing population.

Which view do you agree with more? Give reasons to support your answer.

.....  
.....  
.....  
.....  
.....  
.....  
.....  
.....  
.....  
.....  
.....  
.....  
.....  
.....  
.....  
.....  
.....  
.....  
.....  
.....  
.....[6]

[Total: 25]

- 3 (a) Study Fig. 4 and Fig. 5, which give information for rice production and the area over which it is sown during four years.

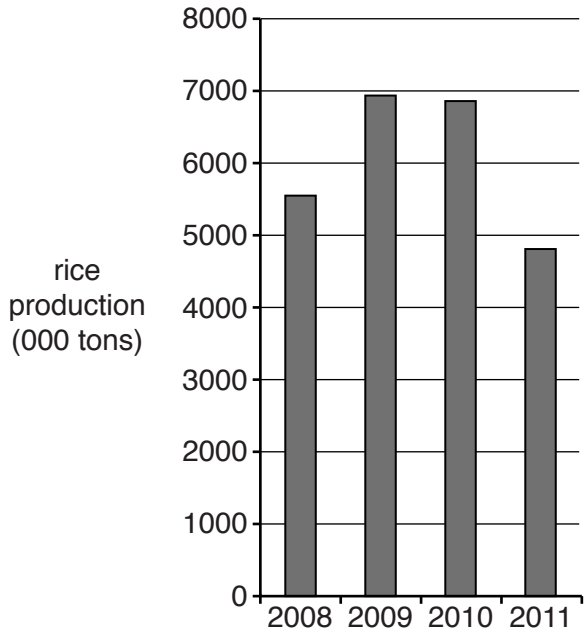


Fig. 4

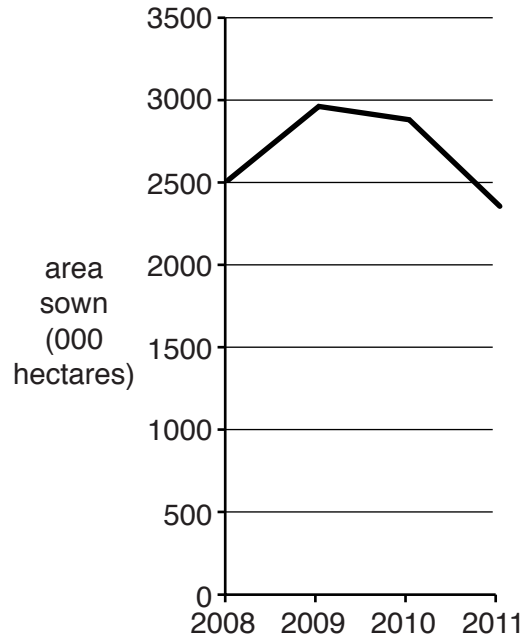


Fig. 5

- (i) What was the production in 2008?

.....[1]

- (ii) What is the difference between the maximum and minimum area sown during these years?

.....[1]

- (iii) Suggest **two** reasons why rice production varies from year to year.

1 .....

2 .....[2]

(b) Study Fig. 6 which shows date and almond growing regions in Pakistan.

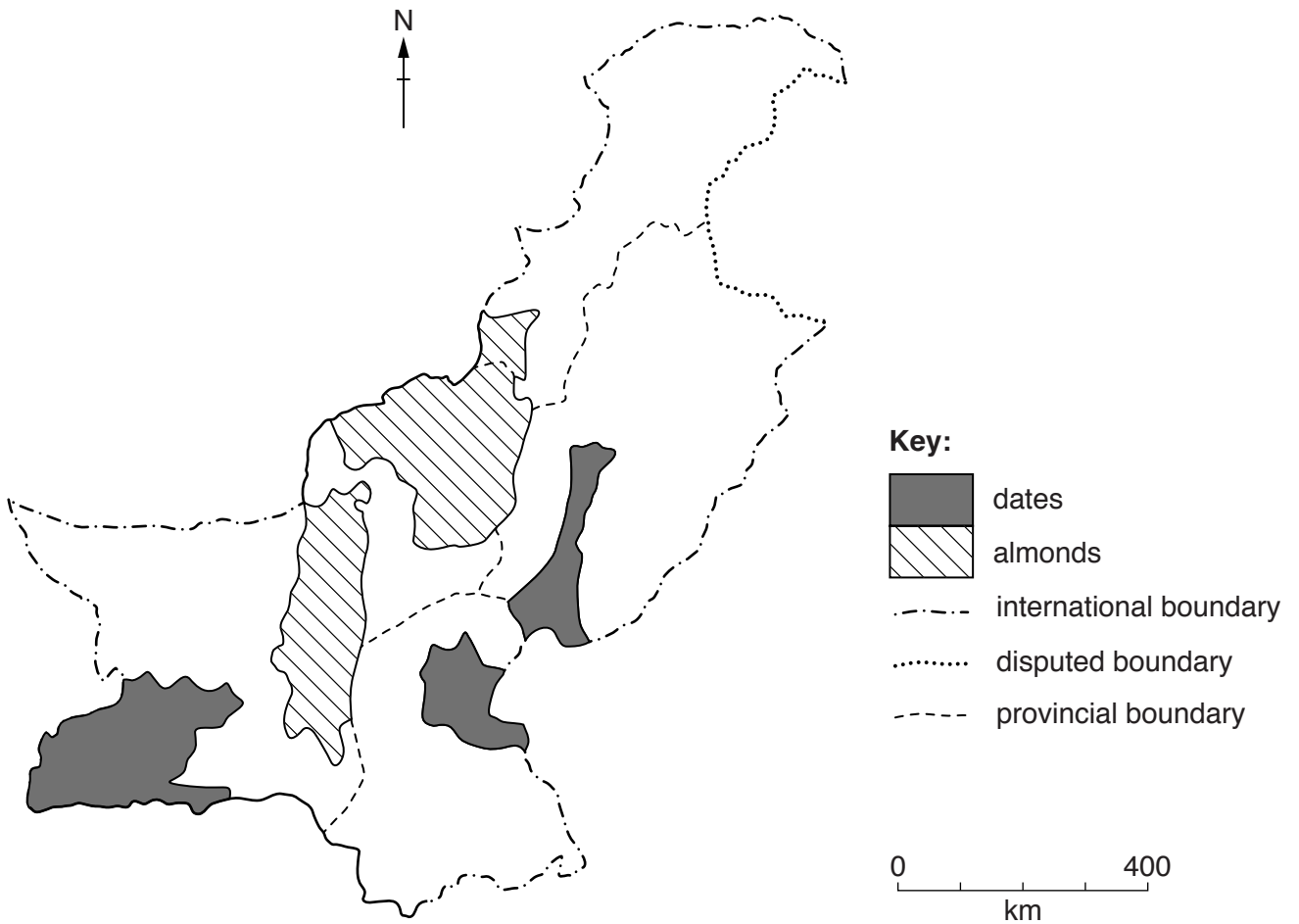


Fig. 6

(i) Describe the distribution of the areas where **almonds** are grown.

.....

.....

.....

.....

.....

.....

.....[3]

(ii) Why are the areas shown on the map suitable for growing **dates**?

.....  
.....  
.....  
.....  
.....  
.....  
.....[3]

(iii) Explain the difficulties in finding and reaching markets for almonds, dates and other fruit grown in Pakistan.

.....  
.....  
.....  
.....  
.....  
.....  
.....  
.....  
.....[4]

(c) (i) Describe what is meant by 'subsistence farming'.

.....  
.....  
.....  
.....[2]

(ii) Explain why some farmers are subsistence farmers.

.....  
.....  
.....  
.....  
.....  
.....[3]



- 4 (a) Study Fig. 7, which gives information for the Gross Domestic Product (GDP) of Pakistan in 1992 and 2012.

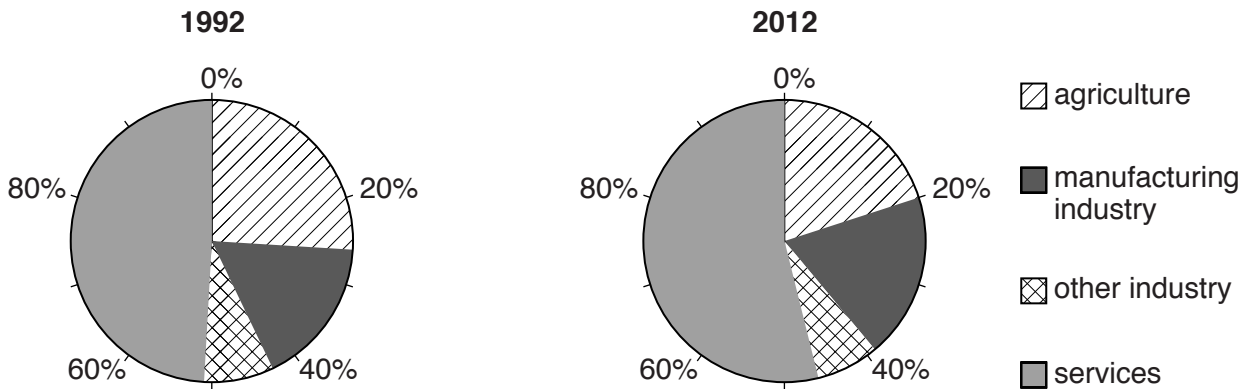


Fig. 7

- (i) What is meant by the term Gross Domestic Product (GDP)?

.....  
 .....[1]

- (ii) A. What percentage of GDP came from services in 2012?

.....

- B. What might be included in the category 'other industry'?

.....

- C. State whether the share of GDP from the following has increased, decreased, or stayed the same in the period from 1992 to 2012:

Agriculture .....

Manufacturing industry .....[3]

(b) Study Fig. 8, which shows the value of exports and imports in Pakistan in 2011.

Category	Exports (US\$ million)	Imports (US\$ million)
Animals and animal products	560	–
Vegetable products	3940	1460
Edible fats and oils	–	2590
Prepared foodstuffs	560	540
Mineral products	690	6030
Chemicals, incl. fertilisers	370	5050
Leather	680	–
Textiles and textile products	13490	2870
Metals	960	2290
Machinery and instruments	640	5130
Vehicles and transport	–	2190
Other	1460	3490
TOTAL	23350	31640

**Fig. 8**

(i) Name a textile product exported by Pakistan.

.....[1]

(ii) How much greater is the total value of all imports than the total value of all exports?

.....[1]

(iii) Use Fig. 8 to describe **three** differences between goods Pakistan exports and imports.

.....  
 .....  
 .....  
 .....  
 .....  
 .....  
 .....  
 .....  
 .....  
 .....[3]

- (iv) Explain **two** problems for Pakistan’s economy caused by the differences you have described in your answer to part (iii).

Problem .....

.....

.....

.....

Problem .....

.....

.....

.....[4]

- (c) (i) State **one** main trading partner with Pakistan for each of exports and imports.

Exports .....

Imports .....[2]

- (ii) Describe a method of transport that could be used for trade with **one** of the countries stated in your answer to part (i). Suggest the benefits of using this method of transport.

Method .....

Benefits .....

.....

.....

.....

.....

.....[4]





5 (a) Study Fig. 9, which is a map giving information about cotton textile industries in Pakistan.

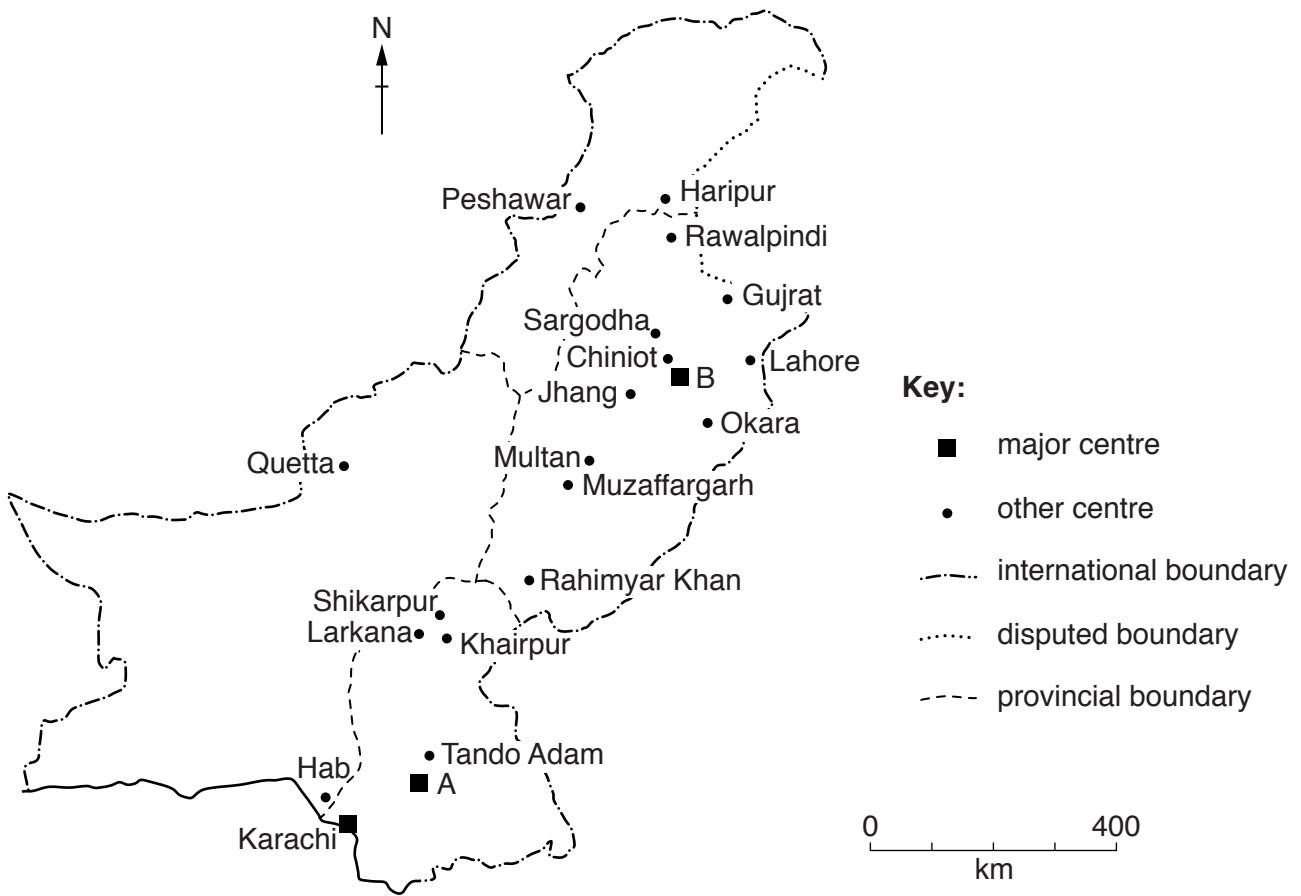


Fig. 9

(i) Name **one** of the major centres of the cotton industry, A or B.

.....[1]

(ii) Suggest reasons why the cotton textile industry is distributed as shown in Fig. 9.

.....  
.....  
.....  
.....  
.....  
.....  
.....  
.....[3]

**(iii)** Explain what can be done to improve Pakistan's cotton textile industry.

.....  
.....  
.....  
.....  
.....  
.....  
.....  
..... [3]

**(b) (i)** State **two** characteristics of employment in the informal sector of industry.

1 .....

2 ..... [2]

**(ii)** Give an example of a job in the informal sector.

..... [1]

**(iii)** Study Photographs C and D (Insert).

A. Describe the road transport that can be seen in Photograph C.

B. Explain the problems of using road transport in the northern areas of Pakistan with reference to Photograph D and your own knowledge.

.....  
.....  
.....  
.....  
.....  
.....  
.....  
.....  
.....  
.....  
.....  
.....  
.....  
.....  
.....  
.....  
.....  
..... [5]

(c) (i) Choose a province and name **two** tourist attractions within it.

Province .....

1 .....

2 ..... [2]

(ii) Suggest **two** problems the tourist industry in Pakistan must overcome in order for it to be more developed.

1 .....

.....

2 .....

..... [2]

(d) Read the following two views:

Tourism is one of the world's fastest growing industries. More attractions and facilities for tourists must be built to help Pakistan develop.

Tourist facilities must be restricted. The increasing number of tourists will damage our culture and cause environmental degradation.

Which view do you agree with more? Give reasons to support your answer.

.....  
.....  
.....  
.....  
.....  
.....  
.....  
.....  
.....  
.....  
.....  
.....  
.....  
.....  
.....  
.....  
.....  
.....  
.....  
.....  
..... [6]

[Total: 25]







**BLANK PAGE**

---

Permission to reproduce items where third-party owned material protected by copyright is included has been sought and cleared where possible. Every reasonable effort has been made by the publisher (UCLES) to trace copyright holders, but if any items requiring clearance have unwittingly been included, the publisher will be pleased to make amends at the earliest possible opportunity.

To avoid the issue of disclosure of answer-related information to candidates, all copyright acknowledgements are reproduced online in the Cambridge International Examinations Copyright Acknowledgements Booklet. This is produced for each series of examinations and is freely available to download at [www.cie.org.uk](http://www.cie.org.uk) after the live examination series.

Cambridge International Examinations is part of the Cambridge Assessment Group. Cambridge Assessment is the brand name of University of Cambridge Local Examinations Syndicate (UCLES), which is itself a department of the University of Cambridge.